



ASHRAE Ottawa Valley Chapter

- DATE:** Tuesday October 21, 2014
Technical Session: 16:00, Social: 17:30
Dinner: 18:30, Program: 19:30
- LOCATION:** Algonquin College Restaurant International
1385 Woodroffe Ave, Building H, Room H100
- PROGRAM:** Natatorium Design



These facilities are notoriously complex to design and can be expensive to operate. The presentation covers the many critical system design aspects of a Natatorium which include the fundamentals of psychrometrics, dew point, humidity/condensation control, moisture load calculation, air distribution, ventilation requirements, water chemistry and how to optimize your operating conditions to minimize operating costs.

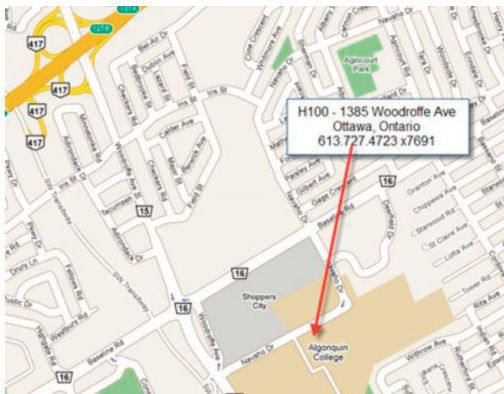
SPEAKER: Mr. Mark Palitza is a Regional Sales Manager for Seresco Technologies Inc., a leading Natatorium dehumidifier manufacturer

SPEAKER BIO: Mr. Palitza is well regarded in the HVAC industry as an expert in dehumidification and Indoor Pool Design. Mark has been in the dehumidification and Natatorium design field as well as Humidification for 25 years and speaks regularly at ASHRAE meetings across the country.

TECHNICAL SESSION:

This month's technical session will center on current HVAC equipment. It will include information on currently available technology such as various compressor options, fans, gas burners and cabinet construction. This session will be useful for any design consultant or contractor that wishes to learn more about the current technology in HVAC equipment. This will be presented by a panel of local suppliers.

DIRECTIONS:



Chapter Members: \$45.00 Guests: \$65.00
Student Members: \$30.00 Life or Fellow: \$45.00

Space is limited so please register online at:
<https://ashraeottawa.simplesignup.ca/en/635/ind ex.php?m=eventSummary>

President's Message

The **ASHRAE** year is now well under way, and I'd like to start my message by thanking everyone who helped make our first meeting such a success. There was a lot of extra effort put in to hosting our September meeting at **Nortec's** manufacturing facility. I'd like to particularly thank our Director, **Sandy Taylor**, and our Program Chair, **Brian Tohana** for their work in making sure the event went smoothly. The feedback we have from our membership is that they appreciated the opportunity to tour the facility, and enjoyed the meeting. I'd also like to thank our Membership for such a strong turnout for the tours and the event.

We will continue the year this month at our regular facility, the **Restaurant International** at **Algonquin College**. We look forward to the exceptional food we receive there and another informative session.

Our theme this month is Students. We are fortunate in our chapter to have many local institutes of higher learning, and we are even more fortunate to have a very strong Student Committee chair in **Adrienne Mitani**. She is working hard to strengthen our student chapter at

Carleton, and re-establish chapters at **Algonquin** and **University of Ottawa**. We rely on graduating students to be the "fresh blood" of the **ASHRAE OVC** chapter, and it is important that we prioritize our student chapters to ensure they see value in becoming members of our chapter. This meshes nicely with the overall yearly theme of mentorship. We will be encouraging attendance from our local student chapters, and I'd ask all of you to try to take some time in the social portion of our evening to speak with a student and tell them a bit about your place in the industry, and encourage them to participate in **ASHRAE**. Please also try to sit with them at dinner, and involve them in your conversations. It can be intimidating for students at our meetings to approach the regular members, so please invite them to sit with you at your table.

This month also sees the re-introduction of our pre-meeting technical sessions. We had offered these with great success some years ago, and will be incorporating several of these into our monthly meetings this year. These will concentrate on some of the basics of thermodynamics, psychrometrics, and engineering design.



President & CRC Delegate
Steve Moons
 2014-2015
 OVC President
Total HVAC

E-mail: Stevem@totalhvac.com

While they are geared towards students and junior engineers, everyone is welcome to attend.

To conclude, I wanted to share how excited I am at this time of year. I find that the industry works at its most efficient from September through early December. People are back from their vacations, the weather (typically) is still good for a number of weeks, and I find we are able to really get traction on moving our projects forward. The same holds true for **ASHRAE**, in that we are now really digging in to providing the service that our membership deserves. Enjoy your autumn, and I look forward to seeing you at our October meeting.

Smith + Andersen

David Eastwood P.Eng.
 Principal
 613 2301186 ext. 403
david.eastwood@smithandandersen.com

1600 Carling Avenue Suite 530 Ottawa Ontario K1Z 1G3
 t 613 2301186 f 613 2302598 smithandandersen.com

Ottawa Vancouver Toronto Edmonton Dubai Calgary

Stantec

David Yin, P.Eng., LEED AP
 Senior Associate, Buildings Engineering

Stantec
 400 - 1331 Clyde Avenue, Ottawa ON K2C 3K4
 phone: (613) 725-5573
 cell: (613) 323-4964 fax: (613) 722-2799
david.yin@stantec.com

TAMCO
 INNOVATIVE DAMPER PRODUCTS

Experience the true meaning of service and quality

Frank Picchione
 Regional Sales Manager

Tel: 800-561-3449
 Cell: 514-781-8381
 Fax: 800-668-8476
frank@tamcodampers.com
www.tamcodampers.com

TAMCO locations in Ottawa, Ontario and Nashville, Tennessee.

Rod Lancefield, P.Eng., LEED*AP
 Engineering Sales
rod@htseng.com
 C 613.851.1997

HTS Ottawa
 1646 Woodward Dr.
 Ottawa, Ontario K2C 3R8
 T 613.728.7400 Ext.221
 F 613.728.8032
 Toll Free 888.280.8544
ontario.htseng.com

InAIR Environmental Ltd.

Lan Chi Nguyen Thi, P.Eng.
 Partner

1390 Prince of Wales Dr., Suite 503
 Ottawa, Ontario K2C 3N6
 Phone 613.224.3863
 Fax 613.224.2561
lanchi.nguyen@inairenvironmental.ca
www.inairenvironmental.ca

Mould & Flood Remediation
 Drinking Water Testing
 Training Courses
 IAQ Surveys

Yorkland Controls
 ENVIRONMENTAL SOLUTIONS

Larry Gravelle
 Tel: (613) 721-3301
 Fax: (613) 721-4906
1-877-733-3833
www.yorkland.net

Honeywell HVACBAS & Vulcan
BELIMO
Johnson Controls FACILITY EXPLORER
SIEMENS
KMC KITCHEN & BATH
GREYSTONE LIGHTING & CONTROL

Yorkland Controls represents leading control systems and component manufacturers. Integrated solutions for Lighting, Card Access, CCTV and Building Automation.

BAXTEC
 Mechanical Services
 Your energy savings partner

MARK CSIFFARY P.ENG.
 President • mark@baxtec.com

Office: 613-738-7450 Fax: 613-738-2973
 Call: 613-229-8277 www.baxtec.com
 2470 Don Reid Drive, Ottawa, ON K1H 1E1

Daniel Chouinard G. S. C.
 VP of Operations
 Cell: (613) 978-2334

S&R MECHANICAL
 Division of 681281 Ontario Inc.

2035 Lanthier Dr., Cumberland, Ontario K4A 3V3
 Tel: (613) 830-0265 ext. 134 • Fax: (613) 830-9152
dchouinard@srmech.com

SIEMENS Industry

Siemens Canada Limited
 Building Technologies Division
 2435 Holly Lane
 Ottawa, Ontario
 K1V 7P2 Canada
 Tel: (613) 733-9781
 Fax: (613) 737-4985
 Cell: (613) 614-7165
atma.anantram@siemens.com

Atma Anantram P.Eng
 Account Executive

What You Missed

The first meeting of the program year took place at **Nortec Humidity**. The meeting was called to order by President **Steve Moons** at 6:10PM and attendees were seated.

The business session commenced with President **Steve Moons** introducing the Board of Governors and Executive, followed by **Adam Graham** introducing the guests for the evening. **Adam Moons** welcomed new members and discussed the night's theme of membership.

Steve Moons then reminded attendees about the upcoming stroke play golf tournament and encouraged people to sign up.

Next, **Matt Coulombe**, a representative from **Longhill**, introduced two Table Top displays of **Nortec NH** and **MH** model humidifiers.

Don Weekes discussed a recent **ASHRAE** merger with IAQA (Indoor Air Quality Association). IAQA will be an independent brand under **ASHRAE**.

Bob Kilpatrick and **Abbey Saunders** took a few minutes and ran through the process of updating **ASHRAE** member bios. **Bob** explained the importance of tracking Chapter, Region, and Society level involvement by assigning points towards recognition awards.

During the social hour, the research promotion committee raffled off tickets to an **Ottawa Senators** game. The tickets were graciously donated by **Cathy Godin** of **SK Sheet Metal**, raising \$520 for **ASHRAE** Research. **Adam Moons** of **Walmar** was the lucky winner.

Following the business session, attendees enjoyed an excellent catered, buffet style dinner.

Before the evening program commenced, a speaker from **Nortec** presented a short "introduction to humidification" presentation. He first explained terms related to humidity, followed by a few slides outlining the importance of proper humidity control. Several different types of humidifiers were introduced along with a few different humidification processes.

Next the evening program presentation commenced with Distinguished Lecturer and Staff Senior Scientist at **Lawrence Berkeley National Laboratory**, **Max Sherman** introducing himself and his presentation outline for "The Dark Side of **ASHRAE**". The "Dark Side" was defined as the parts that the chapter members don't typically see.

Mr. Sherman described what **ASHRAE** is as a society and discussed the Mission, Vision, Core Values, and Code of Ethics of the Society. **ASHRAE** was broken into multiple sides:

Business side of ASHRAE: Communications

- ASHRAE sells publications, advertising, and training

Light side of ASHRAE: Members

- Grassroots organization of Members, Runs on volunteer effort

Dark side of ASHRAE: Technology and Policy

- HVAC&R Content: Research, Standards, Handbook
- HVAC&R Impacts: Positions, Politics, People

Mr. Sherman then presented the **ASHRAE** organizational chart and outlined the controlling documents for Society. The "Dark Side" was broken down into three major pieces and a smaller presentation on each component was given. They are as follows:

Education

ASHRAE Learning Institute (ALI)

- Professional Development Seminars, Short Courses, Spring and Fall Online Courses, Intensive Design Workshops

ASHRAE e-Learning

Certification

- Six certifications demonstrate knowledge and experience in building industry.
- Scholarships
- Over 25 scholarships available to undergrad engineering, undergraduate technology, or high school seniors entering college.

Publications

Cold Climate Design Guide: Estimated publication – **January 2015** Handbook

- Includes four volumes published



Secretary
Adam Graham

2014-2015

OVC Secretary

HTS Ottawa

E-mail: adam.graham@hts.com

annually on 4 year cycle:

- Fundamentals, Refrigeration, HVAC Applications, HVAC Systems and Equipment
- Published in two editions: IP and SI units

ASHRAE Terminology

- Comprehensive online glossary of over 3,700 terms related to the built environment.

Free Resources

- Advanced Energy Design Guides, Indoor Air Quality Guide, Refrigeration Commissioning Guide, Procedures for Commercial Building Energy Audits.
- Available online at: www.ashrae.org

Technology ("darkest of them all")

Standards

- Written since 1922, with approx. 130 active or guideline projects.
- Reviewed and republished to ensure they are up-to-date, e.g., existing code-intended standards are on a three year review cycle.
- 1 of 6 standards-developing organizations accredited by ANSI as an Audited Designator.
- Consensus process ensures standards are developed independent of special interests.
- Volunteer committees bring together a balanced group of technical experts, professionals, government officials and business representatives.
- Most well-recognized standards: 15, 34, 55, 62.1, 62.2, 90.1, 90.2, 189.1

Research

- Core of **ASHRAE**'s existence since 1919.
- Largest program of fundamental and applied research supported by a technical society.
- Importance of **ASHRAE** Research
 - Improves work and application of building systems.
 - Allows development of technical information to create standards and guidelines.
- Displayed Region II Active/ Completed Research (summer/fall

2014)

- Approx. **\$670k** (very high compared to other regions)

Technical Committees (TCs)

- Nearly **4,000** technical committee volunteers, **500** outside N.A.
- **70%** of technical program at annual conferences sponsored by TCs.
- Over **200** Handbook chapters maintained by TCs.
- All active research projects are monitored by TCs.
- Technical Activities Committee coordinates membership, development, oversight.

Building Energy Quotient

- Free submissions offered to qualified ASHRAE members until **Nov. 30, 2014**.
- Expanded to allow submissions by professional engineers in addition to **ASHRAE**-Certified BEAP or BEMP.

After going through these items, the speaker then gave an update on what is currently going on "behind the scenes" at the Society level. This information is quite interesting for Members as it is not something that most are exposed to at the Chapter level. As such, we have summarized this update below:

ASHRAE and **IAQA** merger

ASHRAE Strategic Plan 2014

- 5 initiatives: Market Prioritization, **ASHRAE** Efficiency, Applied Product Development, **ASHRAE**'s Role in the Global Community, **ASHRAE**'s Role in the Residential Sector
- Available online at: www.ashrae.org/strategicplan
- New Residential Emphasis: www.ashrae.org/residential

Council Initiatives: Members Council

- Reviewing flexibility in commercialization policies to assist in chapter formation and support.
- Reviewing **ASHRAE** marketing to ask on behalf of members the "what's in it for me" question as a membership value proposition.
- Developing more cost effective ways to deliver products to chapters
- Reviewing structure of **CRCs** to ensure they continue to meet chapter and regional needs.

Council Initiatives: Publishing/Education Council

- Develop programs for building/

facility owners and operator to support and enhance the effective operation of building HVAC&R systems, through education, as well as evaluation and operational tools.

- Determine the appropriate products and tools to be developed by **ASHRAE** to enhancement of the residential built environment.
- Develop and package practical application programs for delivery through chapters and regions.

ASHRAExCHANGE.org online forum and social media website

New **ALI** course offering

- Emphasis on eLearning and regional/chapter level training
- See course details online at www.ashrae.org

New redlined versions of **ASHRAE** Standards in online bookstore.

- Identifies changes made in standards revision process in red.
- Saves time and resources in implementation of new standards.

ASHRAE and Code Interaction

- Actively engaged in development and maintenance of over **150** standards.
- Value in standards realized when they are adopted and used.
- **ASHRAE** Standards Committee focuses on adoption through Code Interaction Subcommittee (CIS).
 - **CIS** works with other model code and standards writing organizations to have standards adopted in their documents.
 - Many standards are adopted by reference.
 - When standard not written in mandatory or code intended language, it cannot be adopted by reference; then criteria in standard must be adapted for use in other document.
 - Standards committee encouraged to provide mandatory and code intended language.
 - Chapters and members can support effort by: Serving as resource to code officials; Reinforcing value of standards and integrity of standards development process; Participate in standards and code development process of code groups to foster reliance on **ASHRAE** standards.

Scholarships

- Chapters may endow **\$60,000** for scholarship issued annually by Society based on chapter criteria once approved by **ASHRAE Scholarship Trustees**, Foundation Trustees and Board of Directors.
- Minimum scholarship endowment for businesses and individuals (not chapters) is now **\$100,000**.
- Chapters may endow a minimum **\$30,000** for scholarships administered by chapters (checks are issued by Society directly to scholarship recipients chosen by chapters).
- **\$100,000+** in scholarship money awarded for the **2013-2014** year.

All members were encouraged to attend upcoming **ASHRAE** events/meetings.

- www.ashrae.org/membership--conferences/conferences

Once the update was given, **Mr. Sherman** backed up and discussed some key points on **ASHRAE** as a whole. **ASHRAE** (the Society) was founded in **1894** and currently has over **53,000** volunteer members in **130+** countries. There are approximately **5,500** Canadian Members that make up **16** out of **175** Society Chapters. There are currently about **5,000** student members.

An important distinction was made between **ASHRAE** and many other societies. **ASHRAE** is made up of almost all, and run by volunteers. All of the few **ASHRAE** paid staff work for the volunteers. It is estimated that roughly **\$3M** a year of volunteer labour is contributed by the members. It was suggested that this number is likely low. The benefits or **ROI** to volunteering were discussed.

Mr. Sherman went on to conclude with a quote... "A house divided.... Cannot Stand" (referring to the Light and Dark Side). It was stressed that both sides must work together for the overall success of Members, Chapters, and Society as a whole.

Following the presentation, **Mr. Sherman** opened the floor up to some questions. After several minutes of Q&A, President **Steve Moons** thanked the speaker and presented him with a gift. The meeting was adjourned at approximately **8:55PM**.

News Update

ASHRAE RETURNS TO CHICAGO FOR ITS 2015 WINTER CONFERENCE, JAN. 24-28.

The **ASHRAE** Conference will take place **Jan. 24-28** at the **Palmer House Hilton**. The **ASHRAE** co-sponsored AHR Expo, will take place **Jan. 26-28** at **McCormick Place**. Attendees can discuss the latest topics in the building industry; attend the AHR Expo; participate in technical tours; attend **ASHRAE Learning Institute** courses; earn professional credits; obtain **ASHRAE** certifications. For more information please visit: www.ashrae.org/chicago

ASHRAE PROPOSES ALTERNATE COMPLIANCE PATH FOR EXISTING BUILDINGS IN IAQ STANDARD

ATLANTA – Recognizing that the ventilation rate procedure in its indoor air quality standard may be difficult to apply in existing buildings, **ASHRAE** is proposing an alternate compliance path.

Proposed addendum b is one of six addenda to **ANSI/ASHRAE Standard 62.1-2013**, Ventilation for Acceptable Indoor Air Quality currently open for public comment from **Sept. 5** to **Oct. 5, 2014**. To comment or learn more, visit: www.ashrae.org/publicreviews

Responding to increasing interest in sustainability in existing buildings, **Standard 62.1** is cited frequently as a criterion for evaluating ventilation systems in existing buildings. Examples include LEED-EBOM, ENERGY STAR and bEQ. Some building categories, such as K-12 schools and office buildings, are frequently renovated and often have multiple zone systems that provide HVAC to

similar space types.

Section 6 (including the ventilation rate procedure) of the standard was developed as a design standard. As such, Section 6 and Normative Appendix A have the complexity to allow for many complex system designs and airflow pathways. The scope of the standard states in part that *"the provisions of this standard are not intended to be applied retroactively when the standard is used as a mandatory regulation or code."*

"For existing buildings, it may be difficult to apply the ventilation rate procedure (VRP), particularly for buildings with multiple-zone recirculating ventilation systems," Roger Hedrick, chair of the Standard 62.1 committee, said. "This is because determination of some of the values needed to calculate ventilation rates may be difficult or impossible because required information is not available. An example is system ventilation efficiency (Ev), used in equation 6.2.5.4."

Proposed addendum b provides an alternate path of compliance that is needed by the marketplace for those situations where information required to determine system performance is unavailable or for smaller facilities with straightforward multiple zone applications, he said.

Also open for public comment is proposed addendum c, which would revise the current definition of environmental tobacco smoke (ETS) to include emissions from electronic smoking devices and from smoking of cannabis (now allowed by some jurisdictions). The existing requirements for separation of ETS-free



Governor
Daniel Redmond
2014-2015
Chapter Technology
Transfer Chair
MMM Group

E-mail: RedmondDan@mmm.ca
spaces from ETS spaces remain unchanged. The proposed addendum also would clarify that provision of acceptable indoor air quality is incompatible with the presence of ETS, including cannabis smoke and e-cigarette emissions.

Other addenda open for public comment from **Sept. 5** to **Oct. 5, 2014**, are:

- d** - adds an exception to Section 5.8 (Particulate Matter Removal). In sensible-only cooling, the equipment's purpose is to provide only sensible cooling. A chilled beam is an example of this type of equipment. In this case the coil surface would never be wet and the filtration requirements intended for wetted surfaces should not apply. Latent cooling for these systems would be provided by other portions of the system, such as cooling coils in the primary air stream, which would then have independent upstream air filtration.
- e** - modifies Section 8, Operation and Maintenance, incorporating calibration requirements for airflow monitoring sensors and systems and harmonizes Table 8.4.1 (Minimum Maintenance Activity and Frequency) with **ASHRAE/ACCA Standard 180-2012**, Standard Practice for Inspection and Maintenance of Commercial-Building HVAC Systems.

2015 AHR EXPO[®]
JANUARY 26-28 / CHICAGO

p – At present, all occupancy types are required to provide no less than the area component of the minimum ventilation rate during periods when the space is “expected to be occupied.” A previous interpretation clarified that this prohibited the use of occupancy sensors to reduce the ventilation rate to zero during these times. This proposed addendum would allow the ventilation to be reduced to zero through the use of occupancy sensors (not through contaminant or CO2 measurements) for spaces of selected occupancy types.

q - modifies Section 5.2 (Exhaust Duct Location) to clarify requirements by including air classes instead of descriptive language, and modifies the requirements by allowing positively pressurized exhaust ducts inside the space of origin.

ASHRAE RELEASES LEGIONELLOSIS STANDARD FOR FOURTH PUBLIC REVIEW DRAFT

ATLANTA - A fourth version of ASHRAE's proposed legionellosis

standard is open for public comment until **November 10, 2014**.

Standard 188P, Legionellosis: Risk Management for Building Water Systems, currently under development, will establish minimum legionellosis risk management requirements for building water systems. The standard is intended for use by building owners and managers and those involved in the design, construction, installation, commissioning, operation, maintenance and service of centralized building water systems and components.

The draft of the document and instructions on submitting comments can be found at:

www.ashrae.org/publicreviews

The proposed standard will be available for access until **Nov. 10, 2014**. Changes to the proposed standard since its last public review in **January 2013** include:

- Alignment of the document with the revised title, purpose and scope.
- Removal of hazard analysis and critical control points (HACCP) terminology; some of the principles of the HACCP process are

consistent with the process utilized in the document.

- Inclusion of a normative appendix for health care facilities meeting specific requirements that provides an alternate compliance path that is more stringent than for other facilities.
- More emphasis on requirements for design, construction, installation, commissioning, operation, maintenance and service.

Tom Watson, chair of the **Standard 188P** committee, notes that the standard contains both normative sections and appendices that specify what is required to comply. It also contains informative appendices and references as guidance about how to do things that may be necessary for a given building water system.

“Building water systems vary substantially in their design and their capability for transmission of Legionella,” Watson said. “Scientific evidence is either lacking or inconclusive in certain aspects of Legionella control. The informative guidance is included to provide suggestions, recommendations and references.”



Jp2g Consultants Inc.
ENGINEERS ■ PLANNERS ■ PROJECT MANAGERS

1150 Morrison Drive
Suite 410
Ottawa, Ontario
K2H 8S9

Mike Swayne, P. Eng.
Director of Building Services

Phone: 613-828-7800
Fax: 613-828-2600
email: mswayne@jp2g.com



AMERESCO
Green • Clean • Sustainable

ROY SAMHABER, P. ENG.
senior project manager

P: 613 778 8590 x 8593 | P: 888 283 7267 | F: 613 224 3726
rsamhaber@ameresco.com | ameresco.ca
Ameresco Canada Inc.
106 Colonnade Rd N, Ste 200 | Ottawa, ON K2E 7L6



ENGINEERING PERFORMANCE...
... mechanical, electrical, building automation, environmental, ...

bpa
advanced sustainable building systems

Patrick St-Onge, P. Eng. LEED AP | 613-596-6454 | bpa.ca
1960 Robertson Road, Suite 100, Ottawa, Ontario, K2H 5B9

2014 Bowling Social

Ladies and Gentlemen,

You are cordially invited to participate in the **2014 ASHRAE Bowling Social**, to be held on **Wednesday November 19th, 2014** at the **Merivale Bowling Center**.

1916 Merivale Rd., Ottawa,
www.merivalebowlingcentre.com

The format will be three games with 4 people per lane. **7:00 pm** start. Please show up at **6:30** to register. The entry fee is **\$200** per foursome, or **\$60** per individual. The entry fee includes warm-up, 3 games, shoe

<https://ashraeottawa.simplesignup.ca/en/567/index.php?m=eventSummary>

rental and plenty of nachos/wings/pizza. Individual participants will be assigned into groups of four.

This is intended to be a social event to promote the camaraderie and fellowship of **ASHRAE**, please consider attending. Numbers need to be finalized by the first week of November, so please register early. Registration can be done on-line via the link below. Registrations will be confirmed via email receipt. If you have any questions, or need more information, please don't hesitate to contact me.



Committee Chair

Adam Moons

2014-2015

Membership

Committee Chair

Walmar Ventilation Products

E-mail: adam@walmar.net

Payment can be made during the on-line registration.

Adam Moons

Walmar Ventilation Products
24 Gurdwara Rd. Nepean, On.
Cell: 613-323-5341
adam@walmar.net

Job Posting

Applied Energy Systems inc. HVAC Manufacturers Representative for **Southern Ontario Market**, with Offices in **Toronto** and **London**, we are looking for Junior application engineers with 1-3 years of experience, preferably with **Mechanical Engineering Degree**.

We are looking for young recruits to be trained on specific HVAC product lines and support the Sales team. The position offers a competitive salary with a commission structure in place after 2 years. You will be working from our **Ottawa** office and will travel as required for training on certain product lines.

If you are interested in the position, please email your resumé to **Victor Yeramian**.

vyeramian@gmail.com

Resumé requested before **October 30th, 2014**.

Applied Energy Systems Inc.



ASHRAE OVC Seminar

DATE: **Wednesday, November 12, 2014**
Full Day Seminar (8am - 4pm)

LOCATION: Master Group Ottawa Training Room
25H, North Side Road, Nepean, ON, K2H 8S1

TOPIC: **Hydronic/Pumping System Design**

PRESENTER: **Phil Searle, C.E.T.**
Manager, Consultant Services, Xylem

OVERVIEW: This full day seminar will be geared mainly towards consultants with little or some water systems and pumping system design experience and an interest in understanding the components and design fundamentals of these systems. This is the first of a two part presentation series. A full presentation outline for Part 1 is given below.

#	TOPIC	BRIEF DESCRIPTION
1	Hydronics Overview	Definition of Hydronic & review of basic system types.
2	Pump Construction	Review of range of B&G pumps comparing Basemount & Vertical In Line construction. Hi review of vibration.
3	Mechanical Shaft Seal	A susceptible component in a pump. Construction & selection is addressed as well as identifying common failures.
4	Pump Accessories	Suction and discharge fittings addressing the requirements of HI and ASHRAE 90.1.
5	Pump & System Basics	Details of pump construction, how pump curves are generated & a review of the system resistance curve. How to analyze shortfall in system capacity & meet the requirements of ASHRAE 90.1.
6	Parallel Pumping	Construction of parallel pump curves. End of curve operation caution and system operating cost benefits.
7	BPSHA&R	Pump suction conditions determine Net Positive Suction Head Available. Available must exceed required. How to evaluate the condition and negative consequences.
8	Air Management	The role of the Compression/Expansion tank & point of no pressure change. When to contain air & when to vent. Sizing tanks and getting the location right.

Space is limited to 30 people so please register online ASAP
Registration will open shortly and close 1 week prior on **November 5, 2014**

Continental breakfast and lunch will be provided.
Please contact **Sandy Taylor** with any special dietary concerns.
sandy@ashrae.ottawa.on.ca

Table Top Display

What better way to display a new product, existing line, or share great ideas than to have a table-top display at our local **OVC ASHRAE** meetings? The **OVC** meetings provide a captive audience in the industry and exposure to **50+** people.

We currently have table-top openings for our **February 2015** and **May 2015 OVC ASHRAE** meeting schedule. Please contact **Andrew Klassen** at

the email below to secure yours today!

Cost for table-tops is \$225 and spaces are filling up quickly, so book your table-top today!

The featured table-tops for the **October OVC** meeting are **Hydro Ottawa**, **The Master Group** and **PoolPak™** presented by **Total HVAC**.



Committee Chair

Andrew Klassen

2014-2015

Table Top Committee Chair

Trane Canada ULC

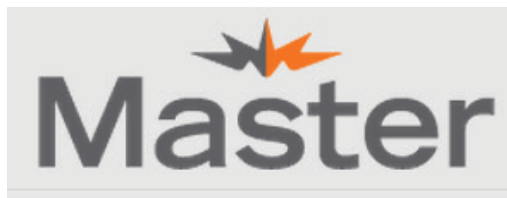
E-mail: andrew.klassen@trane.com

Remember to drop by and check out the displays, and thank you for your continued support of our **ASHRAE** Ottawa Valley Chapter.



Install energy efficient equipment and receive up to 50% of your project costs. The **RETROFIT PROGRAM** makes it possible for commercial organizations to install and benefit from newer, more energy efficient solutions that will help you operate your

business more efficiently and improve your bottom line. Incentives are available for high efficiency equipment such as lighting, motors and heating and for installing new control systems to improve the overall efficiency of your building.



Protecting data processing centers from overheated and humid environments has been our responsibility for over four decades. Our customized solutions meet the unique needs of each and every one of

our customers. Whether your industry is health care or technology, government or financial, Data Aire can create and configure a mission-critical cooling system that saves data, saves energy and saves money.

Data Aire – The leader in precision air control for over 40 years.



PoolPak™ International is recognized as a leader in manufacturing dehumidification systems for large athletic pools, natatoriums in schools and universities, commercial pools and hotel/motel leisure pools.

Their proven approach to dehumidification is your best assurance for optimum space and water conditions while keeping operating cost low through recycled energy.

PoolPak™ dehumidification equipment is built for the corrosive indoor pool environment with features like copper coil construction, key components located out of the corrosive air stream and a durable finish. The control system was developed by **PoolPak™** specifically for their equipment, and will monitor and control the pool environment locally or at any location with access to the internet.

PoolPak™ is proudly represented locally by **Total HVAC**. **Total HVAC** has been professionally representing HVAC&R equipment manufacturers with exceptional sales, support, and accountability for over 17 years. Our policy of continuous improvement means we strive to offer a broad range of the highest quality and most energy efficient products that lead the marketplace in their sector. We are pleased to work with the Eastern Ontario construction community on all construction projects in this capacity.

2014 ASHRAE Golf Tournament

The **ASHRAE OVC** stroke play golf tournament was held again this year at The **Canadian Golf & Country Club**. It was a perfect fall day with very good conditions.

Congratulations go to **Peter Nabi** with **OCDSB**, who was crowned

champion with a score of **76**. The continued success of the tournament means we will continue to hold it next year. You have **12** months to sharpen your game!

See you all next year.



President & CRC Delegate
Steve Moons
2014-2015
OVC President
Total HVAC

E-mail: stevem@totalhvac.com

Chris Harrison
President
chrish@longhill.ca
Phone and cell option: 613-226-3856 ext. 24
Fax: 613-226-2715
124 Reis Rd., Ottawa, Ontario K0A 1L0
www.longhill.ca
The Energy Conservation People

CHRISTOPHER FUDGE P.Eng. LEED® AP
Commercial & Industrial Sales Engineer
cfudge@master.ca
TEL 613-829-2816
CELL 613-761-2173
FAX 613-829-3731
The Master Group L.P.
25H, Northside Road
Ottawa (Ontario) K2H 8S1
MASTER.CA

Jim Mills, P.Eng., ing., LEED® AP
Manager, Mechanical Group, Ottawa
Senior Mechanical Engineer
15 Fitzgerald Road
Ottawa, Ontario, CANADA K2H 9G1
Tel 613-829-2800, ext. 108 ~ Cell: 613-240-2746
Fax: 613-829-8299
www.genivar.com ~ jm.mills@genivar.com

Student Activities

With the new year of classes starting last month we now have a new group from Algonquin College taking on the **2015 ASHRAE** design competition. Students **Jacob Hough, Brian Travis, Akil Alyaacoubi, Kai Bryans, Vinicius Vigolo** will be working to design a Junior College building that will be set in **Qatar**. **Chris Frauley** has again generously donated his time to mentor the group and we look forward to see what the group comes up with.

Also check out the **YEA** section for our joint social event for **YEA** and student members **October 30th!**

The theme of this month's meeting is Students, so we hope to get many new and returning students from Carleton, uOttawa and Algonquin College to come see what the chapter

Smart Start Program:

<https://www.ashrae.org/membership--conferences/student-zone/membership-and-meetings/ashraes-smartstart-program>

has to offer. This month also sees the return of the before meeting technical sessions for students and young engineers to gain exposure to industry technology.

Other information for Students: Check out the **Carleton ASHRAE Student Chapter** website, <http://carletonashrae.blogspot.ca/>

The **ASHRAE Scholarship** program is now accepting applications for undergraduate engineering scholarships at \$3,000 to \$10,000 each, deadlines **December 10th, 2014**. **Engineering Technology Scholarships** deadlines are **May 1st 2015**. Please visit the link below for more information: <http://www.ashrae.org/scholarships>

If you are a student member who just graduated this summer, you can save



Committee Chair
Adrienne Mitani
2014-2015
Student Activity Chair
Smith and Andersen

E-mail:

Adrienne.Mitani@smithandandersen.com

lots of money by transferring your student membership with the **Smart Start Program** save \$410 (US) over three years!

Universities can also apply for the **Undergraduate Student Grant** and receive funding for new projects involving an **ASHRAE** topic. Applies to engineering, architecture, or engineering technology department!
<http://www.ashrae.org/grants>

DANNY DILLON, GSC
PRESIDENT
1481 Cyrville Road
Ottawa, ON K1B 3L7
Ph. 613.741.7731
Cell. 613.880.8504
Fax. 613.741.9962
danny@dilfo.com
DILFO.COM

Goodkey, Weedmark & Associates Limited
Consulting Engineers
50 years 1966 - 2006
Ross McIntyre, P.Eng.
Principal, Designated Consultant, Mechanical Engineer
1688 Woodward Dr., Ottawa, ON, Canada, K2C 3R8
Telephone: 613-727-5111 ext. 239 Fax: 613-727-5115
rossmc@gwal.com

RODDERS CAS
Building System Surveys / Design & Retrofit
AutoCad System Design & Customization
Roderic S. Potter Principal
3 Rochester Street
Carleton Place
ON K7C 2P9
www.rodgers.com
info@rodgers.com
cell 613.266.2134

2014-2015 Research Promotion Campaign

Hello everyone,

It is my pleasure to volunteer and serve as the Research Promotion Chair for the **Ottawa Valley Chapter**. I am excited to help fuel such an important part of our society! **ASHRAE Research** plays a huge role in all aspects of our built environment. Our well-being is determined by the health & functionality of the spaces we spend over **90%** of our time in. Our homes, offices, schools, hospitals, & retail spaces and even the food we eat are all affected and hopefully protected by their HVAC&R system, or lack thereof. **ASHRAE Research** benefits us all. From energy efficiency to indoor air quality to green solutions, it is something that impacts us every day.

Our objective for the **2014-2015 RP Campaign** is **\$25,000**. Although this seems like a lot, our chapter history has shown that this objective is attainable. I want to personally thank my Research Promotion Committee members, **Steve Moons, Donald Weekes, Patrick St-Onge, Christine Kemp, Cathy Godin, Bob Kilpatrick** and **Mike Swayne**, who have volunteered this year for sharing my enthusiasm and understanding of the importance of Research Promotion. Remember, in order to achieve our objective, no donation is

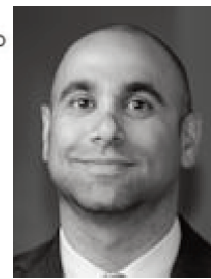
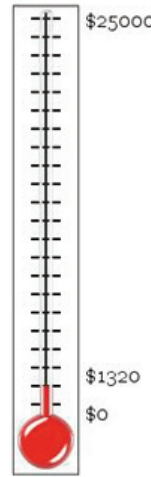
too small. It all goes to a great cause **ASHRAE Research Canada**.

The draw for **Senators** tickets will continue at each dinner meeting. The September meeting netted **\$520** (which is one of the highest ever – your support is fantastic). I would like to thank **SK Sheet Metal** for donating these tickets. Look for your next chance at the October dinner meeting.

As of **October 1st**, we have raised **\$1,320** towards our campaign goal, which is a bit over **5%** of our goal. I would like to thank our current donors to date for the **2014-2015 RP Campaign**. This list will be up-

Honor Roll Donor	Major Donor
Rod Potter	SK Sheet Metal
Steve Moons	
Georges Maamari	
Abbey Saunders	
Adam Graham	
Gemma Kerr	

dated for each monthly newsletter, so hurry up and donate to have your



President-Elect
Georges Maamari
2014-2015
Research Promotion
BPA

E-mail: gmaamari@bpa.ca
name appear.

Remember Canada gets back almost 4 times what is received in donations. The attached table shows all the research projects in Region II.

All donation made by you or your company will get credit with that amount to **ASHRAE Research Canada** (remember for companies it is a charitable donation and tax deductible). It's a win-win situation. Cheques should be made payable to **ASHRAE Research Canada**. My contact details are shown at the bottom of this article, but I will gladly pick up any cheque.

Thank you for your continued support of **ASHRAE Research Canada!**

Georges Maamari, P.Eng
President-Elect and RP Chair
613-596-6454
1960 Robertson Rd. Suite 100
Ottawa, Ontario, K2H 5B9

Description	Location/Researcher	Amount
The Nature, Significance and Control of Solar Driven Vapor Diffusion in Wall Systems	CONCORDIA UNIVERSITY - Montreal, Canada	\$ 167,000
Algorithm for Smoke Modeling in Large, Multi-Compartmented Buildings	NAT. RESEARCH COUNCIL CANADA - Ontario, Canada	\$ 80,000
Thermal and Lighting Performance Metrics of Tubular Day-Lighting Devices	NAT. RESEARCH COUNCIL CANADA - Ontario, Canada	\$ 105,000
Performance of Pressurized Stairwells with Open Doors	NAT. RESEARCH COUNCIL CANADA - Ontario, Canada	\$ 179,728
Characterization of Liquid Refrigerant Flow Emerging from a Flooded Evaporator Tube Bundle	NOVUS ENVIRONMENTAL, INC. Ontario, Canada	\$ 142,000
Update Climatic Design Data in Chapter 14 of the 2013 Handbook of Fundamentals	NUMERICAL LOGISTICS - Waterloo Canada	\$ 138,477
Update Climatic Design Data in Chapter 14 of the 2017 Handbook of Fundamentals	Klimaatt Consulting & Innovations Inc. - Ontario, Canada	\$ 150,000
Investigation of Design Methodology for Net Zero Solar Neighborhoods	CONCORDIA UNIV-Caroline Hachem	\$ 10,000
Photocatalytic Oxidation Air Cleaners for Application in Mechanical Ventilation Systems: Towards the Design of Immune Buildings	CONCORDIA UNIV-Kanstantinos Kapsis	\$ 10,000
Redevelopment and Experimental Validation of Eskilsson's G-function	ECOLE POLYTECHNIQUE DEMONTREAL- Massimo Cirmino	\$ 10,000
Calibrating a Building Energy Model on a Component Level Using a Bottom-up Based Methodology	CONCORDIA UNIV-Nicholas Zibin	\$ 10,000
The protective effect of buildings characterizing indoor air quality, infiltration and ventilation	U-TORONTO- Donna Vakalis	\$ 10,000
Advanced models of fire smoke transport in high rise buildings	CONCORDIA U -Dahai Qi	\$ 10,000
Integrating thermal energy storage into hybrid solar assisted heat pump systems for residential houses in cold climate	RYERSON - Navid Ekrami	\$ 10,000
Occupant-Learning Blinds and Lighting Automation	CARLETON U - Burak Gunay	\$ 10,000
Study on an advance hybrid air filtration system	TIANJIN UNIVERSITY-Zhuangbo Feng	\$ 10,000
Total		\$ 1,052,205

TOTAL HVAC

Steve Moons
Principal

Total HVAC Inc.
14A-190 Colonnade Rd., S.
Ottawa, Ontario
Canada, K2E 7J5

Tel: (613) 723-4611
Fax: (613) 723-4677
Cel: (613) 229-5806
Email: stevem@totalhvac.com
Web: www.totalhvac.com

Andrew Klassen
Account Manager

TRANE

1024 Morrison Drive
Ottawa, ON K2H 8K7
Cell 613 808 4054 Direct 613 356 1966
Tel 613 820 8111
Toll Free 888 872 6326
andrew.klassen@trane.com
www.trane.com

IR Ingersoll Rand

MCKEE ENGINEERING

Sylvain Chenier, P. Eng., ing., LEED®AP
Vice President - Mechanical
Sylvain.Chenier@mckeeottawa.ca

1785 Woodward Drive
Ottawa, ON K2C 0P9
CANADA
Tel.: (613) 723-9585 x128
Fax.: (613) 723-9584
www.mckeeottawa.ca

Young Engineers in ASHRAE

Hi to all new and returning YEA!

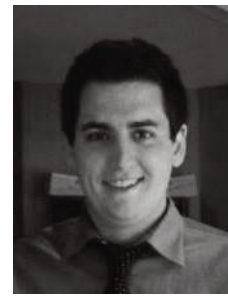
This is my first year as **YEA** chair for the **Ottawa Valley Chapter**, so I would like to start off with inviting you all to a social event to introduce myself and welcome everyone back.

On **Thursday, October 30th**, we will be holding a joint event with **Student Activities** at **TailGators Sports Bar & Pool Hall** at 1642 Merivale Road. The event will start at **6:00pm**, and will include a few pool tables and snacks that will be provided throughout the evening. An email will get

sent out to all registered YEA and OVC members under **35** to sign up for the event!

Members over the age of **35** are still very welcome to attend and I encourage all of you to bring along a non-member guest to see the benefits in becoming a member.

Also this month we will have the return of the before meeting technical sessions, come early to the meeting in **October** and learn about HVAC equipment technology update, including a number of suppliers speak-



Committee Chair

Joe Della Valle

2014-2015

YEA Chair

Walmar Ventilation

E-mail: joedellavalle@walmar.net
ing about compressors, fans, burners and more.

If you have any questions or would like to help choose future **YEA** events, please feel free to contact me.

Membership Update

Greetings Everyone!

For most people, creating professional relationships is important, and joining a group allows you to have a sense of security and trust. From this, you are able to support and help one another in reaching your professional goals. Associations sponsor numerous events throughout the year that allow you to connect with your peers. You can share ideas, ask for advice, volunteer to be a speaker or become a member of a committee. Since most associations have national or local conferences, you can participate and have the opportunity to learn about breaking news in your career, learn "best practices" or new ideas, hear about key achievers in your field and also meet and brainstorm with others who are also looking to share and learn new information. Another benefit of enhancing your network is that you may find a mentor to help you with your professional needs or you may be in a position to become a mentor to someone else. Giving back can be the greatest reward and benefit. Participating in forums, chat groups or discussion boards sponsored by the association is also a great way to grow your network. This allows you to use your peers as sounding boards and often make some great friends with the same interests as you.

Another important reason to consider

membership to a professional organization is to take advantage of their career resources. Associations often have job listings online or in print available only to their members. This is a great way to find targeted job postings for your area of interest. Additionally, many associations have career resources available such as tips on effective resumes or cover letters, job searching strategies and negotiating techniques. Some associations even have panels of experts that you can contact for specific questions on career issues. Other benefits include information about seminars, training or certification classes that may be suitable for you. Often these classes can be done through web- or podcasts so you don't even have to leave your home. And don't forget, listing your association membership on your resume is impressive to current or future employers as it shows that you are dedicated to staying connected in your profession.

Most associations provide an enormous amount of access to resource information such as: case studies, articles, white papers and books written by experts in your field or area of interest. Also, major journal, magazine and newsletter access is provided as a part of your membership privileges. Another reason to join an association is to learn more or stay informed about issues in diversity. Additionally, associations provide a source for



Committee Chair

Adam Moons

2014-2015

Membership
Committee Chair

**Walmar Ventilation
Products**

E-mail: adam@walmar.net

scholarship information, links to publications, and awards for persons achieving excellence in their field. No matter what your field is, staying on top of all of these issues is important.

So, whether you are looking to learn about job postings in your field, network in your professional community, gain access to current events in your career area, or just have some fun while meeting new people, joining a professional association is a step in the right direction! Give it some thought!

I would also like to introduce and welcome the following new members:

Miss Celine Baribeau
Mr. Ryan Dickinson
Mr. Rene Dube
Dr. Libing Yang

Looking forward to seeing you at the next **ASHRAE** event!

2014-2015

President

Steve Moons

President-Elect

Georges Maamari

Treasurer

Abbey Saunders

Secretary

Adam Graham

Governors

Richard Cameron

Chris Fudge

Aaron Dobson

Chris Frauley

Daniel Redmond

Past President

Roderic Potter

Committees

Attendance

Sandy Taylor

Audit

Stephen Lynch

Capital Communiqué

Richard Cameron

Celine Baribeau

CRC

Steve Moons

CTTC

Daniel Redmond

Grassroots

Government Affairs

Kashyap Desai

Financial

Sandy Taylor

Greeter

Miker Swayne

History

Aaron Dobson

Membership

Promotion

Adam Moons

Nominations &

Awards

Robert Kilpatrick

PAOE

Georges Maamari

Program

Brian Tohana

Atma Anantram

Research

Promotion

Georges Maamari

Roster

Georges Maamari

Special Events

Chris Healey

Andrew Douma

Student

Activities

Adrienne Mitani

Table Top

Andrew Klassen

YEA

Joe Della Valle

Website

Roderic Potter

Advertising

Advertising career opportunities on the **ASHRAE** Ottawa Valley website makes good business sense. We offer a unique way to reach technical professionals and make your ad dollars work hard for you.

To discuss your needs, contact one of our chapter officers, via our "This Year" page. Increase the impact of your advertising through the **ASHRAE** Ottawa Valley website today.

Rates for career opportunities ads are as follows:

Chapter Member: \$50/month

Non-member: \$250/month

Placement of an Ad

We suggest that you complete and submit our advertisement form to speed up the processing of your request. If you have provided your e-mail address, a confirmation receipt e-mail will be sent to you for reference.

Please note that ads require prepayment made to the treasurer. Please register and pay online or for payment and other information contact **Abbey Saunders** at abbey.saunders@nrc-cnrc.gc.ca.

The ads will appear on the website until the end date for publication provided in the submitted form. To extend the ad, please resubmit the form with the new publication dates and the required prepayment amounts.



E-mail: stevem@totalhvac.com

President & CRC Delegate

Steve Moons

2014-2015

OVC President

Total HVAC



WESMECH
TECHNICAL SALES INC.

50 Ronson Drive, Suite 160 • Toronto, Ontario • M9W 1B3
Tel: 416-251-8990 • Watts: 1-800-613-3789 • Fax: 416-251-8900
www.wesmechtech.com

Joseph McCallion, C.E.T.
President


josephm@wesmechtech.com cell: 416-720-8976



Stéphan Riffault, P.Eng.
Sales Representative

1250 Old Innes Road, Unit 518
Ottawa, Ontario K1B 5L3
613-565-2129, ext. 2128

sriffault@regulvar.com
www.regulvar.com



WALMAR www.walmar.net

24 Gurdwara Road
Nepean, Ontario
K2E 8B5

Tel: (613) 225-9774
Fax: (613) 225-2972

RANDY CAVILL, C.E.T.
President

e-mail: randy@walmar.net

VENTILATION & FILTRATION PRODUCTS